

# THE ROBERT GOETZ AWARD

for Distinguishing Career in Landscape Architecture



# THE ROBERT GOETZ AWARD

for Distinguishing Career in Landscape Architecture

- Acknowledge the career of a Saint Louis area landscape architect who has practiced the profession with integrity, distinction and excellence.

- Qualifications:

1: Practice of landscape architecture in private or public sector for a minimum of twenty five years.

2: Licensed landscape architect in Missouri or other state; Licensure in good standing with the state, void of claims and violations of state ordinances regarding the practice of landscape architecture.

3: Member of the American Society of Landscape Architects.

4: Significant service in promoting the profession through education, volunteer efforts, and service as a member or officer in the St. Louis Chapter of the American Society of Landscape Architects.

5: Nomination letters from a minimum of five references.



asl  
awards program 2005



Blackmer - Creeley Garden  
ASLA Commendation Award 1969



Commendation Award, ASLA 1969















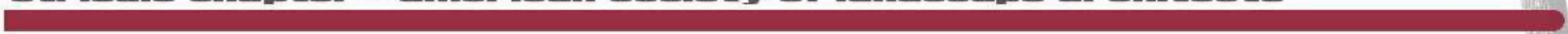
Merit Award ASLA St. Louis Chapter 1995



Merit Award St. Louis Chapter ASLA, 199



Merit Award, ASLA St. Louis Chapter 1995





Merit Award St. Louis Chapter ASLA 1995






**st. louis chapter - american society of landscape architects**





A photograph of an indoor courtyard or conservatory. In the foreground, there is a long, low wooden bench with a curved backrest, surrounded by lush green plants. The ground is a reddish-brown color. In the background, there is a building with large windows and columns, and several trees. The lighting is warm and indoor.

Chesterfield Mall  
1977 National Landscape  
Award from AAN



Dierbergs Market Place



Dierbergs Brentwood Point

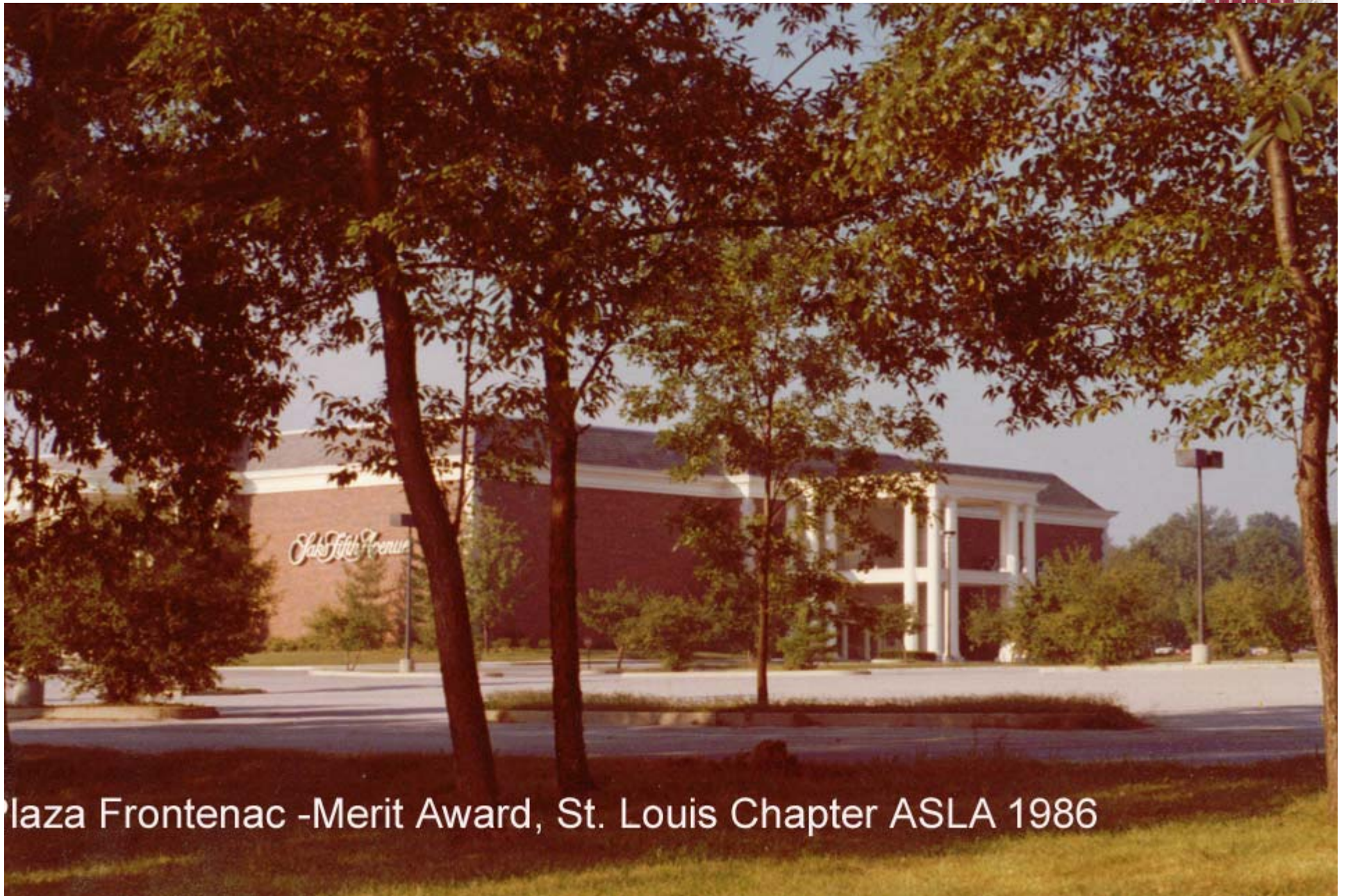


McDonnell Douglas Corporation 1979 National Landscape Award AAN

**st. louis chapter - american society of landscape architects**



Meadowbrook Country Club



Plaza Frontenac - Merit Award, St. Louis Chapter ASLA 1986





Lone Elk Park





1984 Athletic Facility Award  
Athletic Business Magazine



Gordon Moore Park, Alton, IL - 1984 Athletic Facility of Merit  
Civic Award, St. Louis Chapter ASLA 1991



Oriental Garden, Gordon Moore Park  
Civic Award, St. Louis Chapter, ASLA, 1991



Boore Park Rose Garden

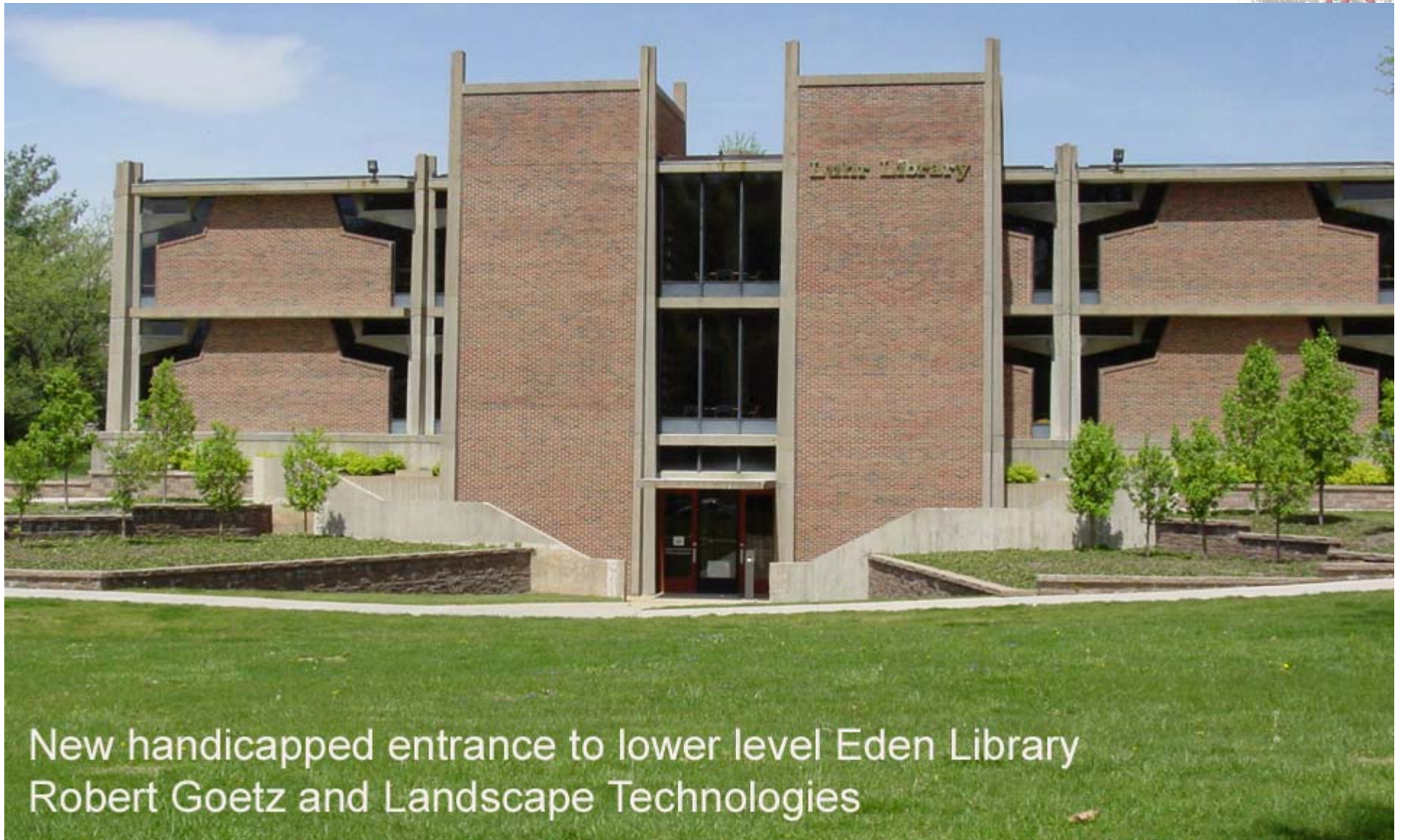




Eden Seminary, Robert Goetz and Landscape Technologies



Former entrance to Eden Library Lower Level



New handicapped entrance to lower level Eden Library  
Robert Goetz and Landscape Technologies

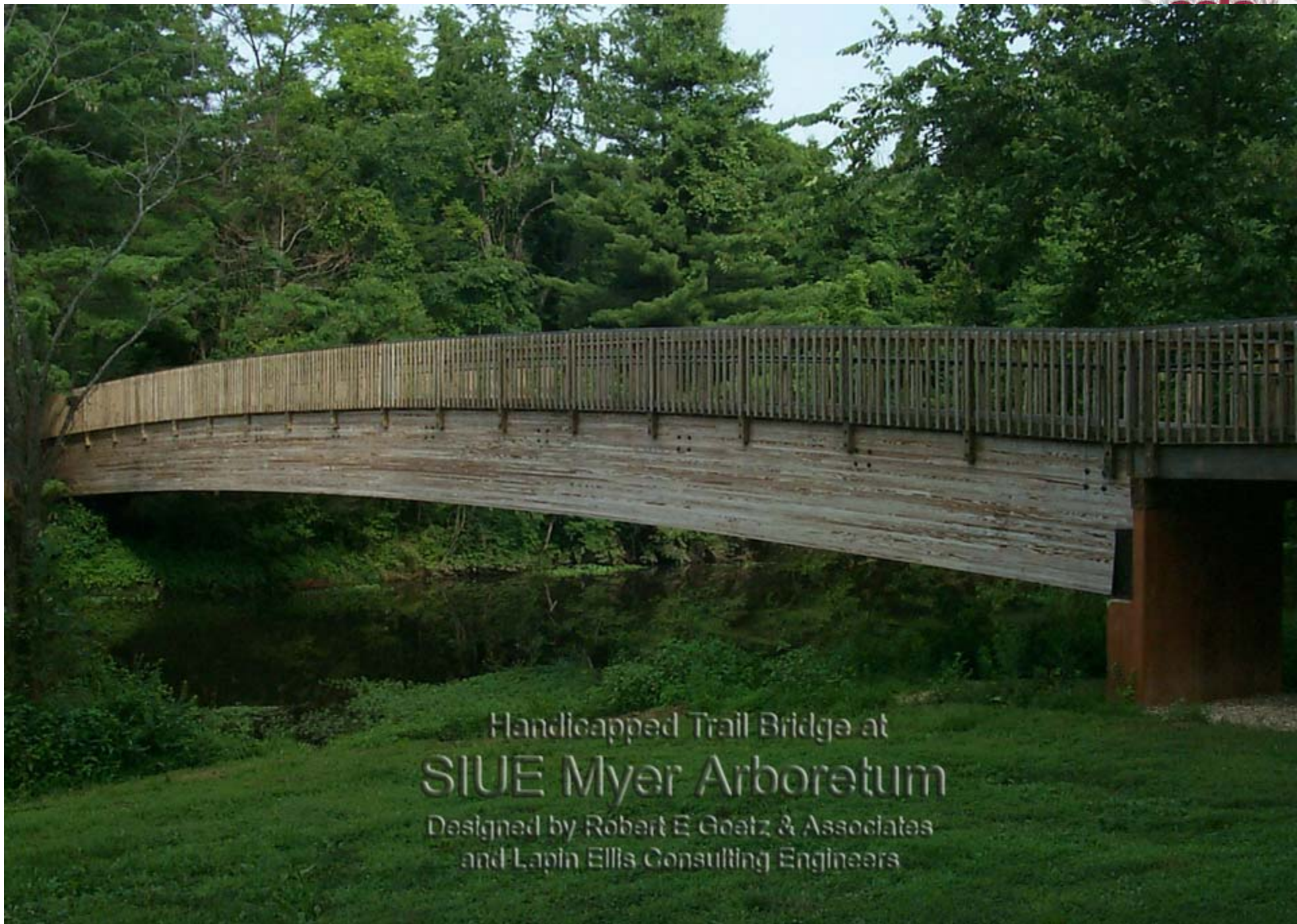




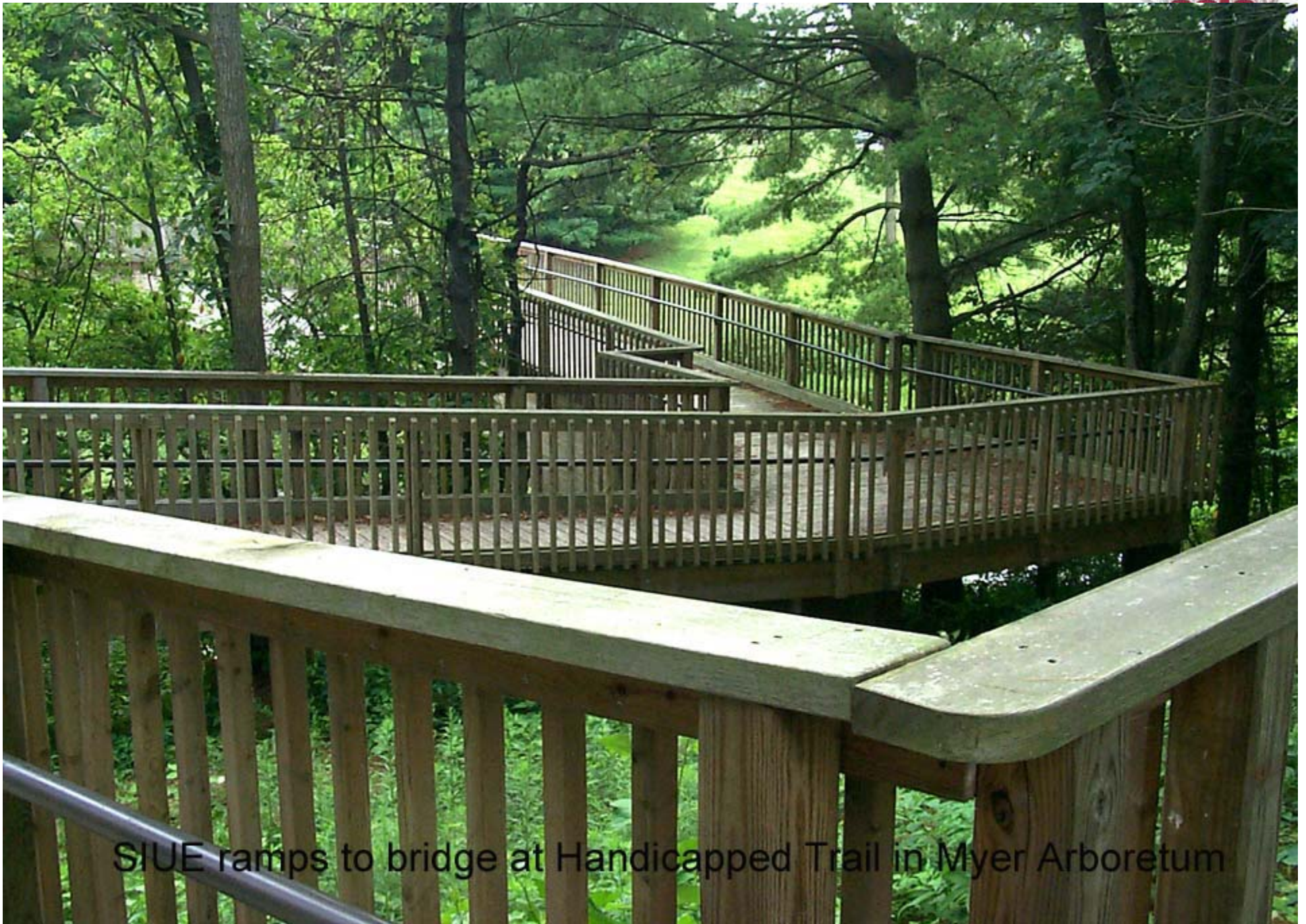
Eden Seminary Quadrangle  
Robert Goetz and Landscape Technologies



Jungle of the Apes - Honor Award St. Louis Chapter ASLA 1988

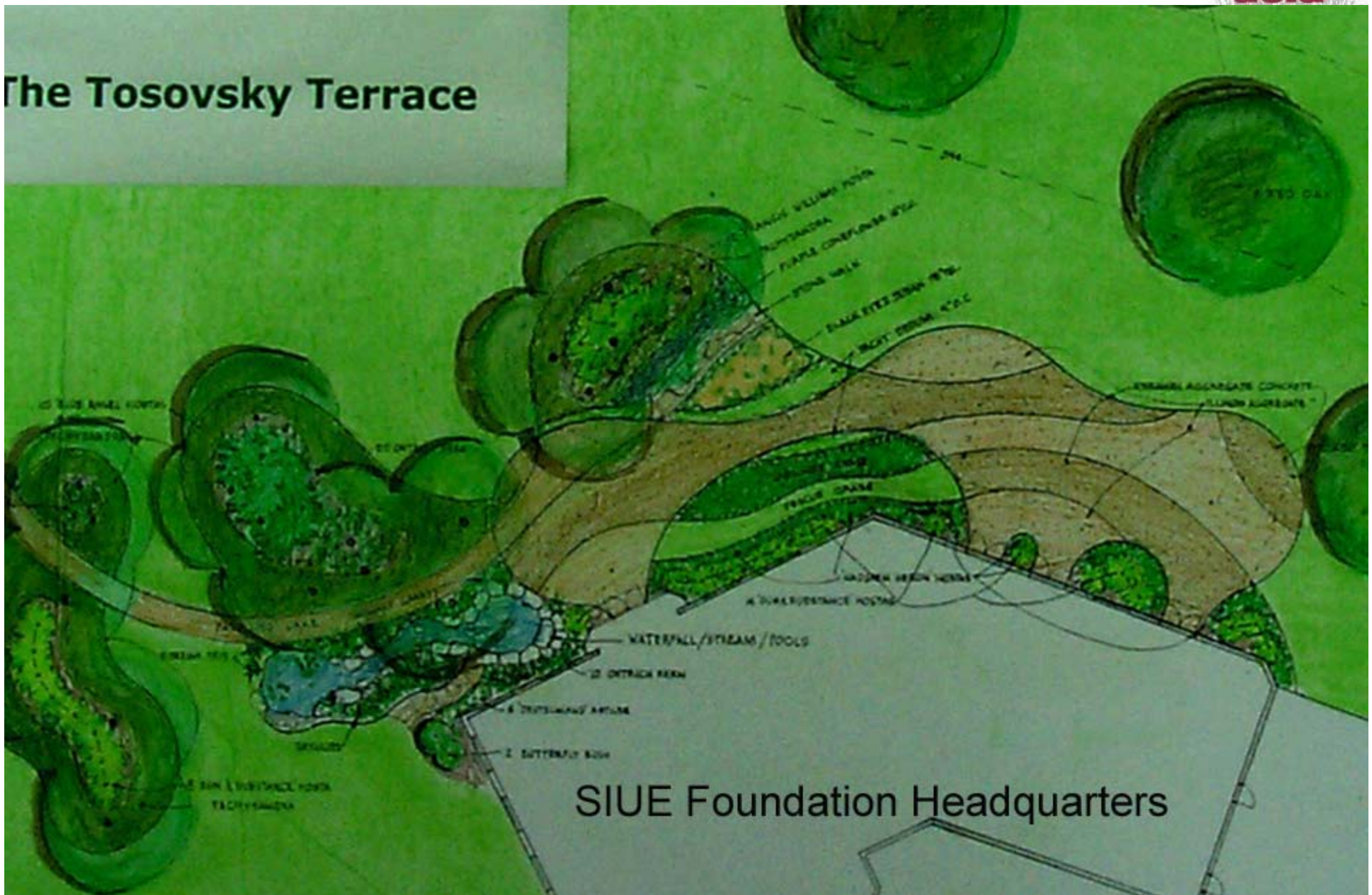


Handicapped Trail Bridge at  
**SIUE Myer Arboretum**  
Designed by Robert E Goetz & Associates  
and Lavin Ellis Consulting Engineers



SIUE ramps to bridge at Handicapped Trail in Myer Arboretum

# The Tosovsky Terrace



SIUE Foundation Headquarters



SIUE Tosovsky Garden at SIUE Foundation



Tosovsky Waterfall & Stream

## Early view of Village of Green Trails







Lake at Village of Green Trails



Seven Trails West



Whispering Hills Subdivision, Creve Coeur, Mo